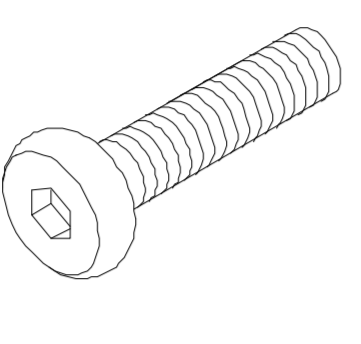
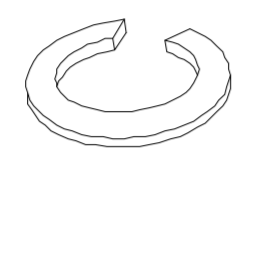
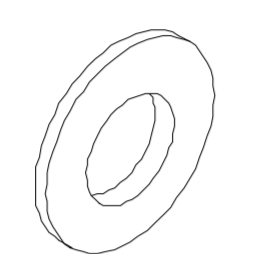
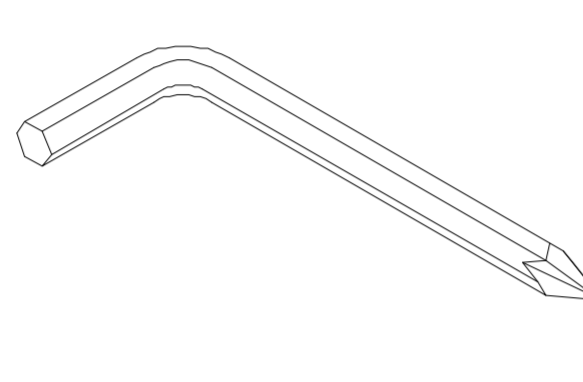
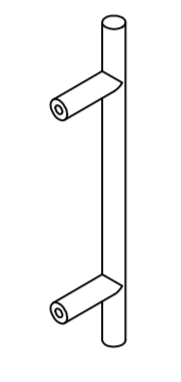
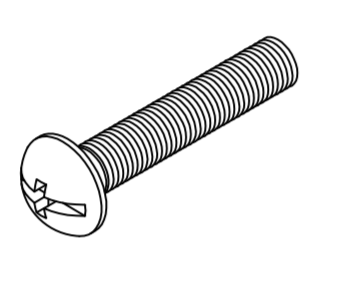
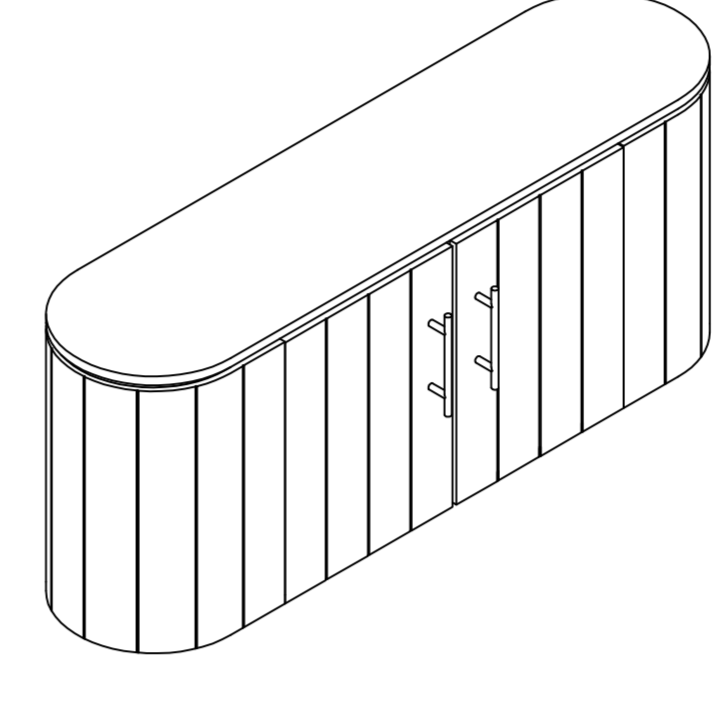
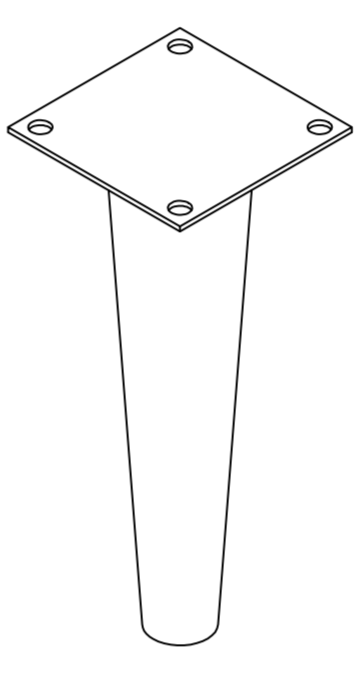


**ASSEMBLY INSTRUCTIONS(INSTRUCTIONS D'ASSEMBLAGE)**

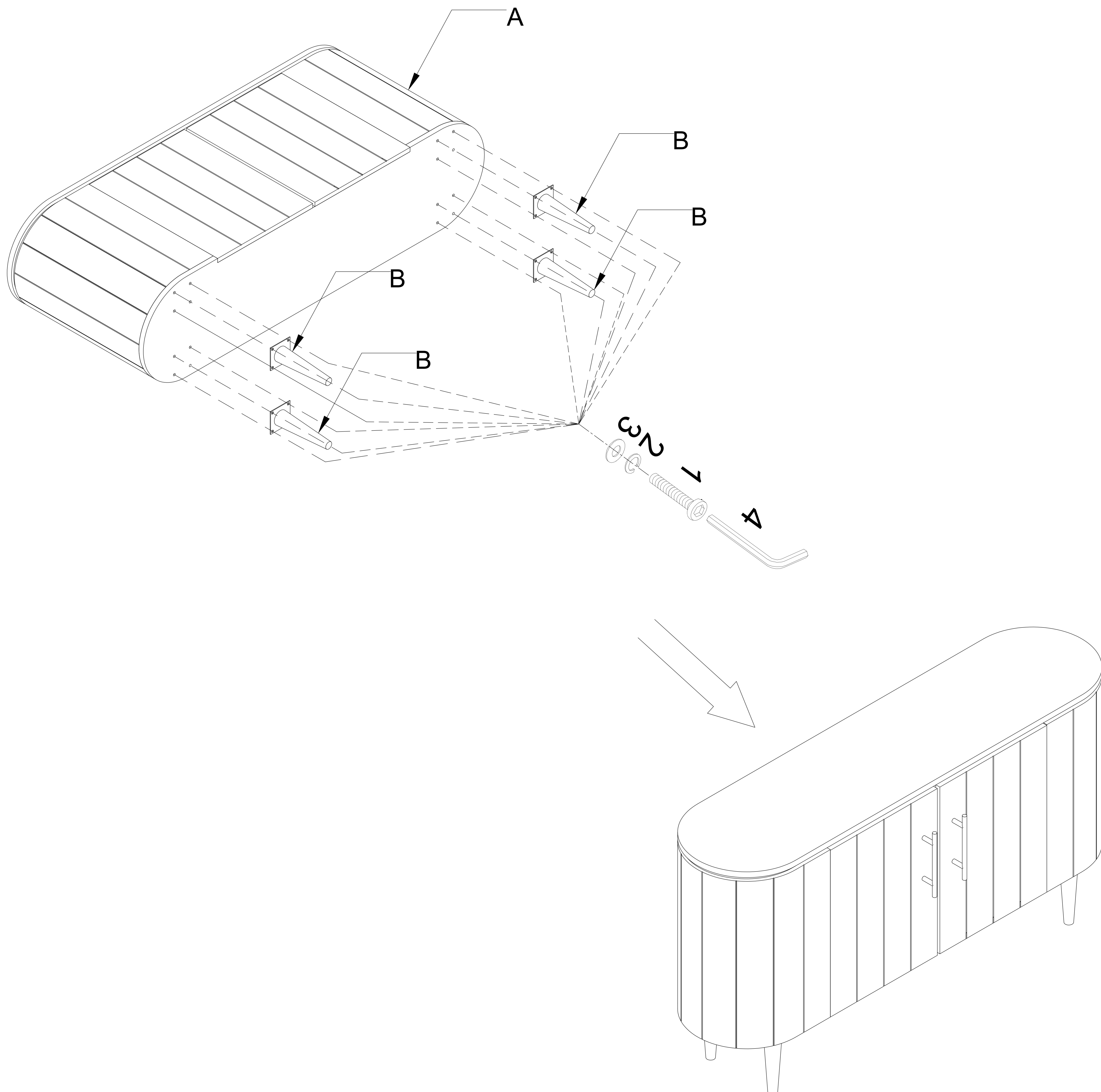
**HARDWARE LIST (LISTE DES OUTILS):**

NO. NO.	Sketch Schéma	Description Description	Qty Qté
1		Bolt(1/4" x 5/8") Boulon	16 PCS 16 PCES
2		Spring Washer(1/4") Rondelle frein	16 PCS 16 PCES
3		Washer(1/4") Rondelle plate	16 PCS 16 PCES
4		Allen Wrench(4mm) Clé hexagonale	1 PC 1 PCE
5		Metal handle Poignée en métal	2 PC 2 PCE
6		Bolt(1/6" x 3/4") Boulon	4 PCS 4 PCES

**PARTS LIST (LISTE DES PIECES):**

NO. NO.	Sketch Schéma	Description Description	Qty Qté
A		Cabinet Armoire	1 PC 1 PCE
B		Metal foot	4 PCS 4 PCES

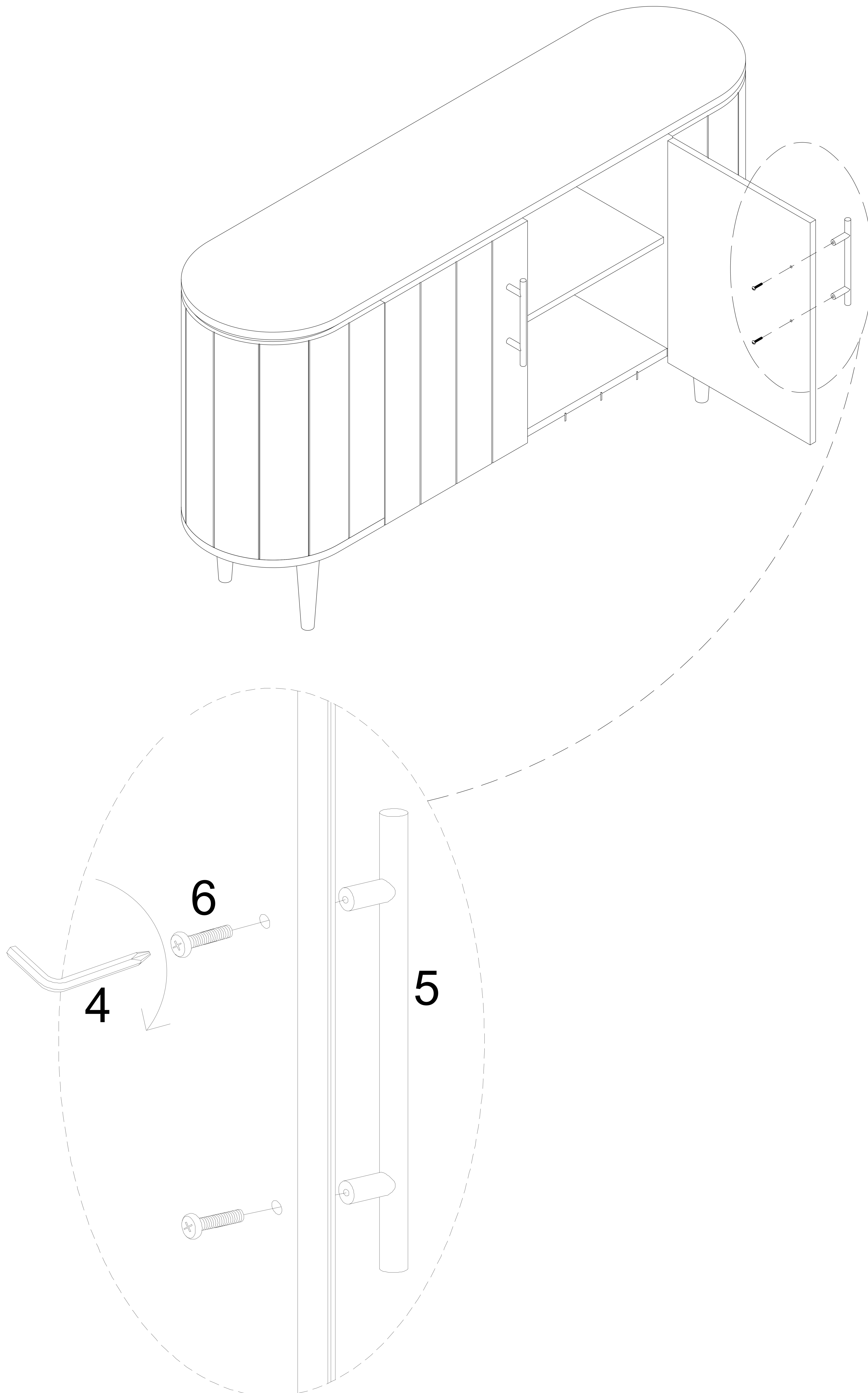
**STEP 1/ ÉTAPE 1**



**ASSEMBLY INSTRUCTIONS(INSTRUCTIONS D'ASSEMBLAGE)**

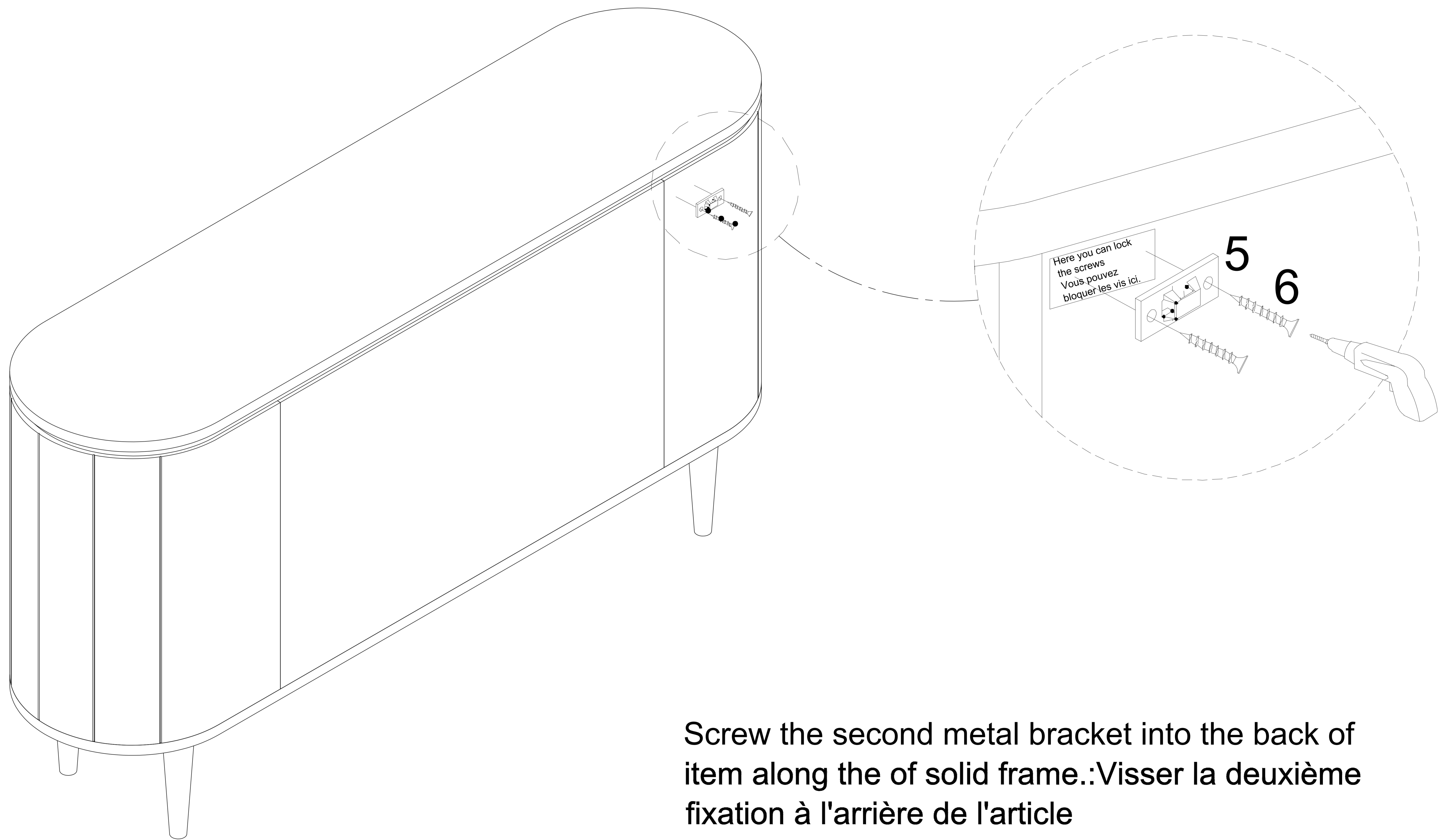
**Note: Hardware included only compatible with standard drywalls. Notez que la quincaillerie incluse est compatible avec les ancrages de mur standard**

STEP 2/ ÉTAPE 2

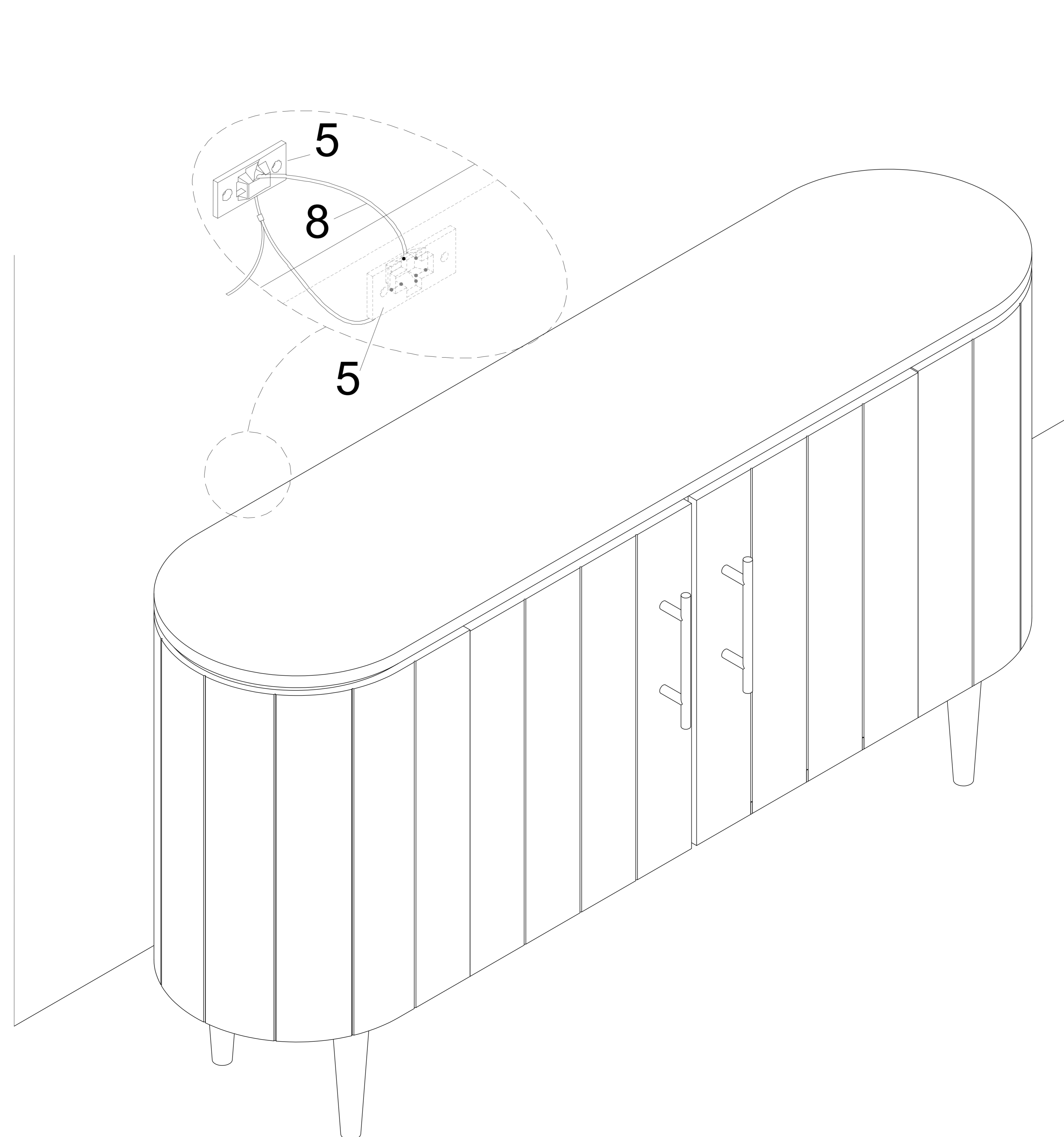


**ASSEMBLY INSTRUCTIONS(INSTRUCTIONS D'ASSEMBLAGE)**

STEP 5/ ÉTAPE 5



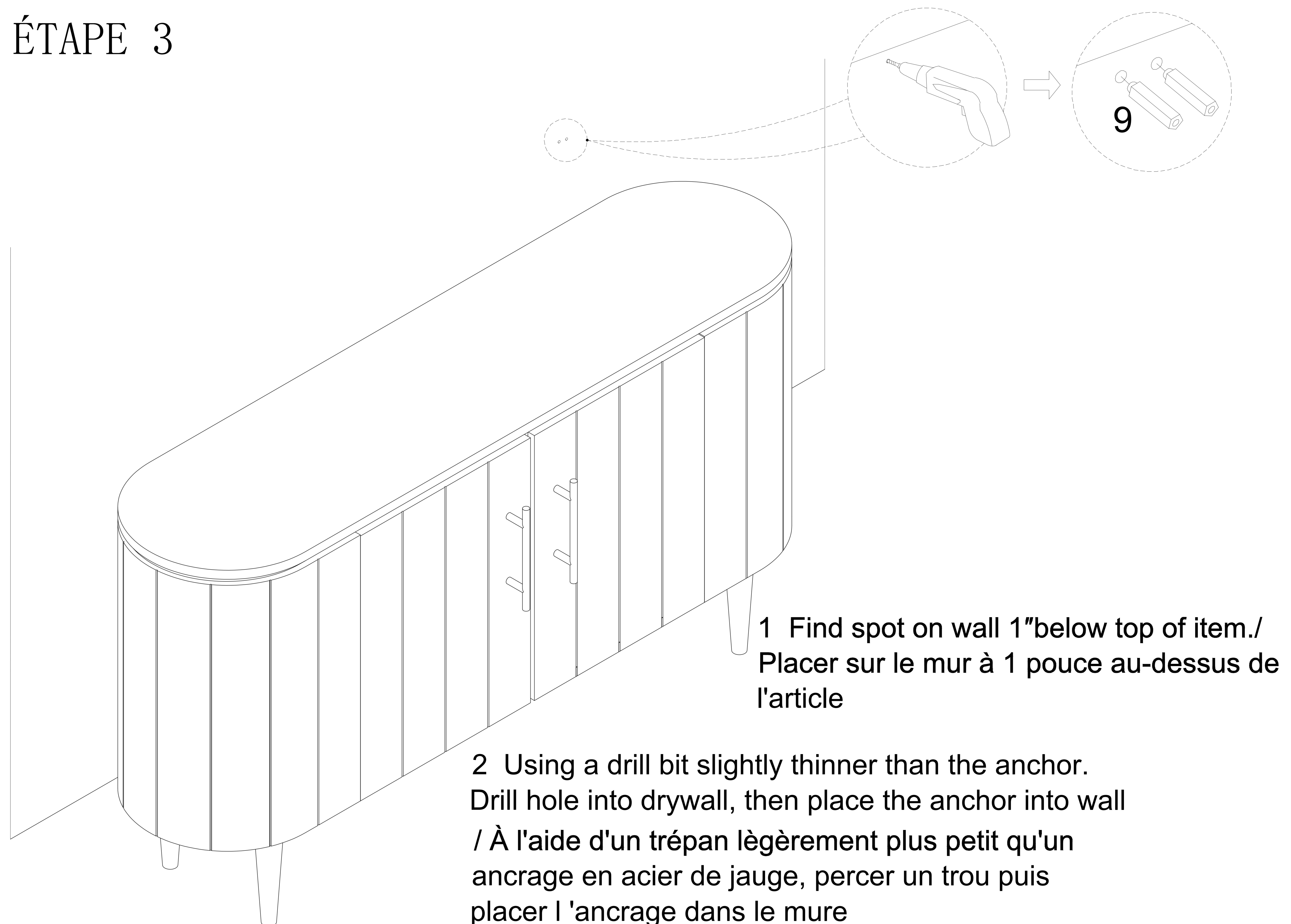
STEP 6/ ÉTAPE 6



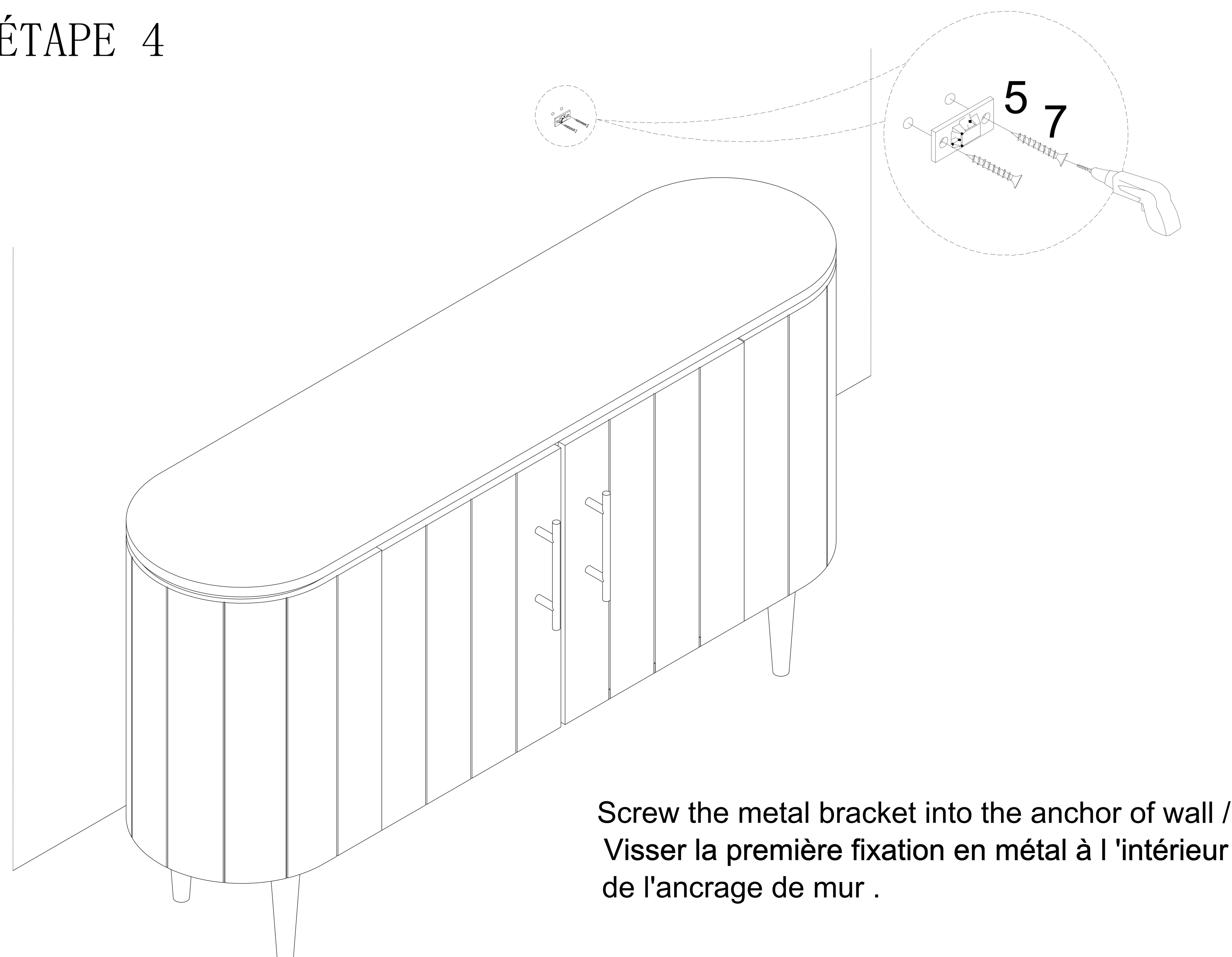
**ASSEMBLY INSTRUCTIONS(INSTRUCTIONS D'ASSEMBLAGE)**

**Note: Hardware included only compatible with standard drywalls. Notez que la quincaillerie incluse est compatible avec les ancrages de mur standard**

STEP 3/ ÉTAPE 3

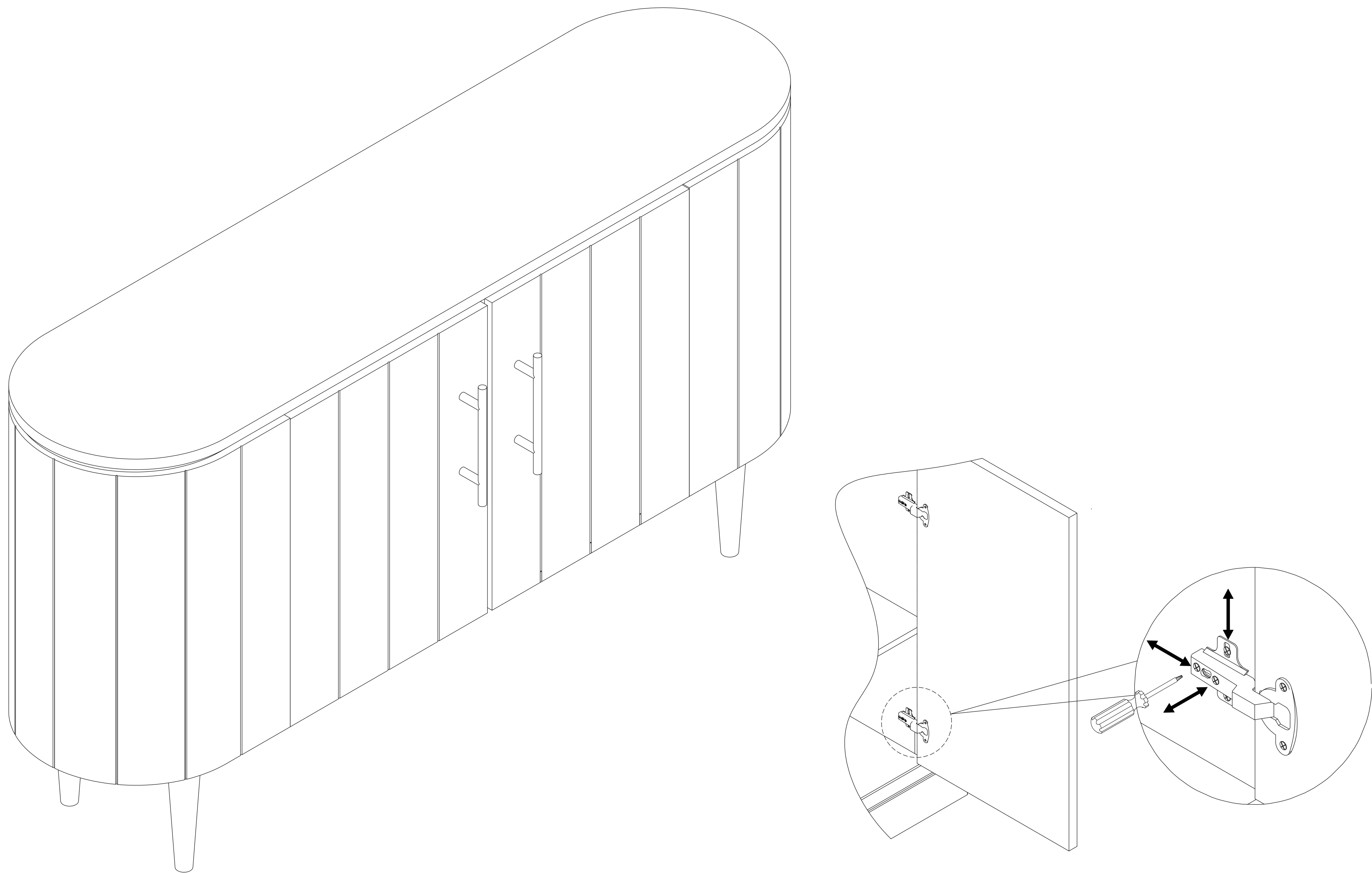


STEP 4/ ÉTAPE 4



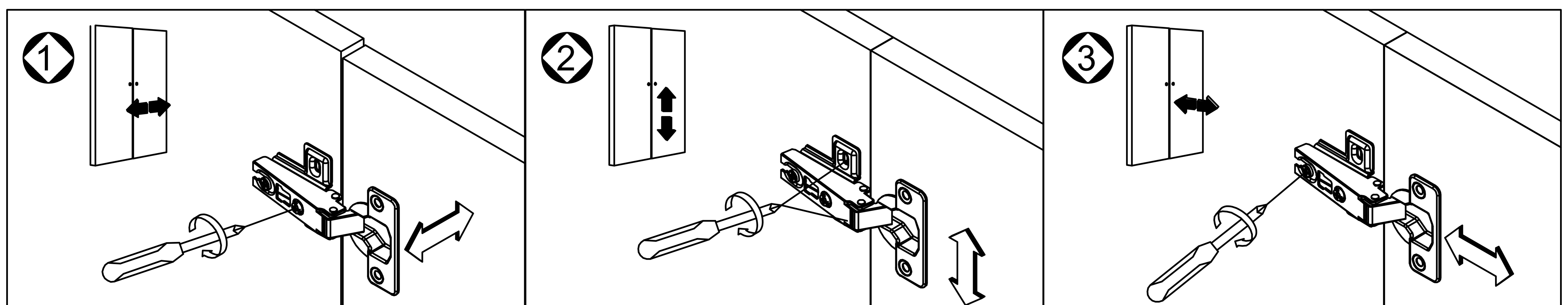
**ASSEMBLY INSTRUCTIONS(INSTRUCTIONS D'ASSEMBLAGE)**

STEP 7/ ÉTAPE 7



Tip: If A does not help, you might want to take a step further by adjusting the hinges on the doors. Please refer to the step by step figure instructions down below.

Astuce : Si la méthode A ne fonctionne pas, vous pouvez aller plus loin en ajustant les charnières des portes. Veuillez vous référer aux instructions étape par étape illustrées ci-dessous.



A. Lateral adjustment (Moving Door Left-Right) by adjusting screw

A. Ajuste lateral (puerta móvil izquierda-derecha) ajustando el tornillo

A. Réglage latéral (porte mobile gauche-droite) par réglage de la vis

B. Vertical adjustment (Moving Door Up-Down) via slot in the mounting plate

B. Ajuste vertical (Moving Door Up-Down) a través de ranura en la placa de montaje

B. Réglage vertical (Moving Door Up-Down) via fente dans la plaque de montage

C. Front-to-back adjustment (Spacing Door Off Carcas) by slacking the hinge arm mounting screw

C. Ajuste de fretea espalda (puerta de espaciado de las canales) aflojando el tornillo de montaje del brazo de la bisagra

C. Réglage avant-arrière (Espacement de la porte hors carcasse) en relâchement de la vis de montage du bras de charnière